

Mandiri Global Sharia Equity Dollar (Class A)

Equity Fund Syariah

NAV/Unit USD 1,765109

Reporting Date

30 January 2026

Effective Statement

S-159/D.04/2016

Effective Date

06 April 2016

Custodian Bank

Bank Citibank

Inception Date

04 August 2016

AUM MGSED-A

USD 38,91 Million

Total AUM MGSED

USD 38,91 Million

Currency

American Dollar (USD)

Pricing Frequency

Daily

Minimum Initial Investment

USD 10.000

Number of Offered Units

2.000.000.000 (Two Billion)

Management Fee

Max. 3% p.a

Custodian Fee

Max. 0,25% p.a

Subscription Fee

Max. 2%

Redemption Fee

Max. 2% (≤ 1 year) 0% (> 1 year)

Switching Fee

Max. 2%

ISIN Code

IDN000237104

Bloomberg Code

MANGSED:J

Benefits Of Mutual Fund

- Professional management
- Investment value growth
- Investment diversification
- Liquidity or Participation Unit are easy to redeem
- Information transparency

Main Risk Factor

- Risk of Diminishing of NAV of each participation unit
- Risk of Exchange Rate
- Risk of Liquidity
- Risk of Discontinuity and Liquidation
- Risk of Foreign Securities

Investment Period



Risk Period



Description

MGSED Fund investing in Foreign Sharia Equity listed in Sharia Securities List with Long Term and categorized High Risk. This Mutual fund's Portfolio carries various risks for investor.

Information on Mutual Fund Ownership

Confirmation letter for subscription, redemption and switching of mutual funds are valid legal proof of mutual fund ownership issued and delivered by the custodian bank. In case there is Securities Ownership (AKSES) facility, Participation Unit Holders could see Mutual Fund ownership through KSEI AkSES webpage, <https://akses.ksei.co.id/>.

About Mandiri Investasi

PT Mandiri Manajemen Investasi (Mandiri Investasi) is a separate subsidiary of PT Mandiri Sekuritas established in October 26, 2004. PT Mandiri Sekuritas is Indonesia's leading investment bank and a subsidiary of PT Bank Mandiri (Persero) Tbk., the country's largest state-owned Bank. Mandiri Investasi and/or its predecessors have been managing investment portfolios since 1993, with Business License Number: No. Kep-11/PM/MI/2004. Mandiri Investasi is one of the Indonesia's largest domestic mutual fund with total assets under management totaling Rp 65,81 Trillion (as of 30 January 2026).

Custodian Bank

Citibank, N.A. has received approval as a Custodian Bank in the Capital Markets sector based on the Decree of the Chairman of the Capital Market Supervisory Agency No. KEP-91/PM/1991 dated October 19, 1991, therefore registered with and supervised by the Financial Services Authority (OJK).

Investment Objective

Providing attractive long-term investment rate of return in US Dollar denomination, by investing in foreign Sharia equity securities portfolio listed in Sharia Securities List.

Investment Policy*

Equity Sharia Securities	: 80% - 100%
Fixed Income Sharia Securities and/or Money	: 0% - 20%
Market Sharia and/or Sharia Deposit	

*From investment portfolio above, RD MGSED will invest with min. 51% of Foreign Sharia Securities

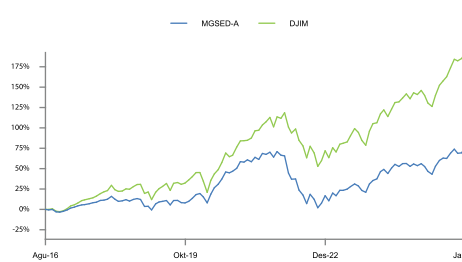
† Excluding cash and cash equivalents

Portfolio Allocation*

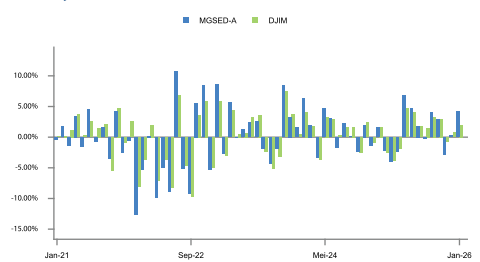
Sharia Equity	: 96,78%
Sharia Deposit	: 0,00%

*) Excluding cash and cash equivalents

Fund Performance



Monthly Return



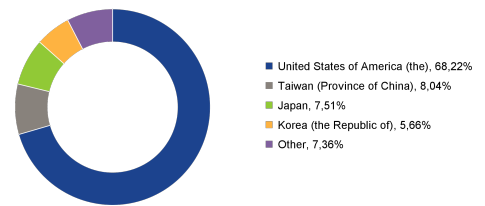
Top Holdings

(In Alphabetical Order)

Alphabet Inc-CI A	Sharia Equity	5,69%
Amazon.Com Inc	Sharia Equity	4,37%
Apple Inc	Sharia Equity	3,96%
Lam Research Corp	Sharia Equity	2,91%
Meta Platforms Inc-Class A	Sharia Equity	4,62%
Micron Technology Inc	Sharia Equity	4,01%
Microsoft Corp	Sharia Equity	4,44%
Nvidia Corp	Sharia Equity	6,54%
Taiwan Semiconductor Manufacturing Co Ltd	Sharia Equity	8,04%
Walmart Inc	Sharia Equity	3,35%

Country Allocation

(5 Biggest Country)



Performance - 30 January 2026

	1 Month	3 Months	6 Months	1 Year	3 Years	5 Years	YTD	Since Inception
MGSED-A	: 4,21%	1,49%	8,32%	13,10%	47,01%	11,73%	4,21%	76,51%
Benchmark*	: 2,01%	2,26%	10,50%	14,74%	51,84%	45,77%	2,01%	150,11%

*Dow Jones Islamic World Index

Benchmark Performance after tax, where capital gain and dividend is received by taxable Mutual Fund in accordance with the applicable corporate tax rate in Indonesia.

Highest Month

(July 2022)

10,69%

Lowest Month

(January 2022)

-12,68%

This Mutual fund had the highest performance of 10,69% in July 2022 and reached the lowest performance of -12,68% in January 2022.

Market Outlook

Global equity markets traded with heightened volatility, driven by geopolitical developments and shifting expectations around U.S. monetary policy. At its 29 January 2026 meeting, the Federal Reserve left the federal funds rate unchanged at 3.50–3.75%, in line with expectations, following three rate cuts in 2025. On the inflation front, core PCE rose 0.2% MoM in November, with the annual rate at 2.8% YoY, up from 2.7% in October. Meanwhile, core CPI in December increased 0.2% MoM and 2.6% YoY, below market expectations (0.3% MoM; 2.7% YoY), marking the lowest YoY core inflation since March 2021, although still above the Fed's 2% target. U.S. economic growth remained resilient. GDP growth in 3Q25 was revised up to 4.4% QoQ, from 4.3% QoQ, exceeding 2Q25 growth of 3.8% QoQ. Consumer demand stayed firm, with retail sales rising 0.6% MoM in November, reversing a 0.1% MoM contraction in October, supported by a rebound in auto sales. However, labor market momentum softened, as Non-Farm Payrolls increased by 50,000 in December, down from 56,000 in November, while the unemployment rate edged down to 4.4% from 4.5%. Activity indicators showed mixed signals. ISM Manufacturing PMI remained in contraction for the tenth consecutive month at 48.9, improving from 48.2, while ISM Services PMI stayed in expansion for the tenth straight month at 54.4, up from 52.6, highlighting continued strength in the services sector. Policy uncertainty increased following President Donald Trump's nomination of Kevin Warsh as the next Chair of the Federal Reserve, which reinforced market expectations that interest rates could remain higher for longer. Sentiment was further weighed down by geopolitical and trade tensions, including U.S. tariff threats linked to a proposed Greenland acquisition, ongoing U.S. involvement in Venezuela, and heightened tensions and domestic protests in Iran, sustaining elevated volatility across global risk assets.

Fund Bank Account

Citibank N.A., Indonesia
RD SYARIAH MANDIRI GLB SHR EQT DR
0-810-437-502

DISCLAIMER

INVESTMENT IN MUTUAL FUND CONTAIN RISK. PRIOR TO INVESTING IN MUTUAL FUND, POTENTIAL INVESTOR MUST READ AND UNDERSTAND THE PROSPECTUS. PAST PERFORMANCE DOES NOT GUARANTEE / REFLECT THE FUTURE PERFORMANCE OF THE FUND. FINANCIAL SERVICE AUTHORITY (OJK) NEITHER GIVE ANY STATEMENT TO APPROVE OR REJECT THE SECURITIES NOR EXPRESS THE ACCURACY OR ADEQUACY OF THE CONTENTS OF MUTUAL FUND'S PROSPECTUS. ANY CONTRADICTION STATEMENT SHALL BE LEGAL BREACH. MUTUAL FUND IS A CAPITAL MARKET PRODUCT AND NOT A PRODUCT PUBLISHED BY SELLING AGENT/BANKS THE SELLING AGENT OF THE FUND SHALL NOT RESPONSIBLE FOR ANY CLAIM AND RISKS OF THE MANAGEMENT OF THE MUTUAL FUND'S PORTFOLIO BY INVESTMENT MANAGER.

This product information summary does not replace the Mutual Fund Prospectus and prepared by PT Mandiri Manajemen Investasi. Mandiri Global Sharia Equity Dollar is not sponsored, endorsed, sold promoted by SPDJI, Dow Jones, S&P, their respective affiliates or their third party licensors and none of such parties make any representation regarding the advisability of investing in such product(s) nor do they have any liability for any errors, omissions, or interruptions of the Dow Jones Islamic Market. JP Morgan Asset Management (singapore) Limited or JPMAM is not the issuer of Mandiri Global Sharia Equity Dollar and has or assumes no responsibility for the management of the fund or this document. The Technical Adviser's involvement in the fund does not create any actual or potential liability on the part of the Technical adviser to any party (including any unitholders) other than the Investment Manager pursuant to the term of the Investment Advisory Agreement. Unitholders shall not have any grounds of action or rights of recourse, directly or indirectly, to the Technical adviser.

The Dow Jones Islamic Market Index is a product of S&P Dow Jones Indices LLC, its affiliates and/or their third party licensors ("SPDJI"), and has been licensed of use by PT Mandiri Manajemen Investasi. S&P® is a registered trademark of Standard & Poor's Financial Services LLC ("S&P"); Dow Jones® is a registered trademark of Dow Jones Trademark Holdings LLC ("Dow Jones"); and these trademarks have been licensed for use by SPDJI and sublicensed for certain purposes by PT Mandiri Manajemen Investasi. Mandiri Global Sharia Equity Dollar is not sponsored, endorsed, sold promoted by SPDJI, Dow Jones, S&P, their respective affiliates or their third party licensors and none of such parties make any representation regarding the advisability of investing in such product(s) nor do they have any liability for any errors, omissions, or interruptions of the Dow Jones Islamic Market. JP Morgan Asset Management (singapore) Limited or JPMAM is not the issuer of Mandiri Global Sharia Equity Dollar and has or assumes no responsibility for the management of the fund or this document. The Technical Adviser's involvement in the fund does not create any actual or potential liability on the part of the Technical adviser to any party (including any unitholders) other than the Investment Manager pursuant to the term of the Investment Advisory Agreement. Unitholders shall not have any grounds of action or rights of recourse, directly or indirectly, to the Technical adviser.

PT Mandiri Manajemen Investasi is licensed and supervised by the Indonesia Financial Services Authority (Otoritas Jasa Keuangan) and every product offering is conducted by officers who are registered and supervised by the Indonesia Financial Services Authority (Otoritas Jasa Keuangan)

PT Mandiri Manajemen Investasi

Menara Mandiri 2 Lantai 15, Jl. Jend. Sudirman Kav. 54-55
Jakarta 12190, Indonesia Call Center: (021) 526 3505



Mandiri investasi



Mandiri.investasi



Mandiri Investasi

Further information and Fund Prospectus can be accessed through our site www.mandiri-investasi.co.id