

Mandiri Investa Pasar Uang (Class A)

Money Market Fund

NAV/Unit IDR 1.817,85

Reporting Date

30 January 2026

Effective Statement

S-3009/PM/2004

Effective Date

24 September 2004

Custodian Bank

Bank Citibank

Inception Date

17 March 2005

AUM MIPU-A

IDR 11,21 Trillion

Total AUM MIPU

IDR 11,97 Trillion

Currency

Indonesian Rupiah (IDR)

Pricing Frequency

Daily

Minimum Initial Investment

IDR 10.000

Number of Offered Units

20.000.000.000 (Twenty Billion)

Management Fee

Max 1,5% p.a

Custodian Fee

Max. 0,25% p.a

Subscription Fee

-

Redemption Fee

-

Switching Fee

Max. 1%

ISIN Code

IDN000001302

Bloomberg Code

MANIPUA : IJ

Benefits Of Mutual Fund

- Professional Management
- Investment Diversification
- Investment Value Growth Potential
- Easy investment disbursement

Main Risk Factor

- Risk of Deteriorating Economic and Political Condition
- Risk of Default
- Risk of Liquidity
- Risk of Diminishing of NAV of each participation unit
- Risk of Electronic Media Transaction
- Risk of Dissolution and Liquidation Market Risk

Investment Period

< 3 3 - 5 > 5

< 3 : Short Term

Risk Period

Low

Description

MIPU Fund Investing in Money Market with Low Term and categorized Low Risk. This Mutual fund's Portfolio carries various risks for investors.

Information on Mutual Fund Ownership

Confirmation letter for subscription, redemption and switching of mutual funds are valid legal proof of mutual fund ownership issued and delivered by the custodian bank. In case there is Securities Ownership (AKSES) facility, Participation Unit Holders could see Mutual Fund ownership through this page <https://akses.ksei.co.id/>.

About Mandiri Investasi

PT Mandiri Manajemen Investasi (Mandiri Investasi) is a separate subsidiary of PT Mandiri Sekuritas established in October 26, 2004. PT Mandiri Sekuritas is Indonesia's leading investment bank and a subsidiary of PT Bank Mandiri (Persero) Tbk., the country's largest state-owned Bank. Mandiri Investasi and/or its predecessors have been managing investment portfolios since 1993, with Business License Number: No. Kep-11/PM/MI/2004. Mandiri Investasi is one of the Indonesia's largest domestic mutual fund, with total assets under management totaling Rp. 65,81 Trillion (as of 30 January 2026).

Custodian Bank

Citibank, N.A. has received approval as a Custodian Bank in the Capital Markets sector based on the Decree of the Chairman of the Capital Market Supervisory Agency No. KEP-91/PM/1991 dated October 19, 1991, therefore registered with and supervised by the Financial Services Authority (OJK).

Investment Objective

Offering high liquidity to fulfill short-term cash requirements while delivering attractive investment returns

Investment Policy*

Money Market and/or Bonds** : 100%

*) excluding cash and cash equivalent and may invest up to a maximum of 15% in Foreign Securities

**) maturing < 1 year

Portfolio Allocation*

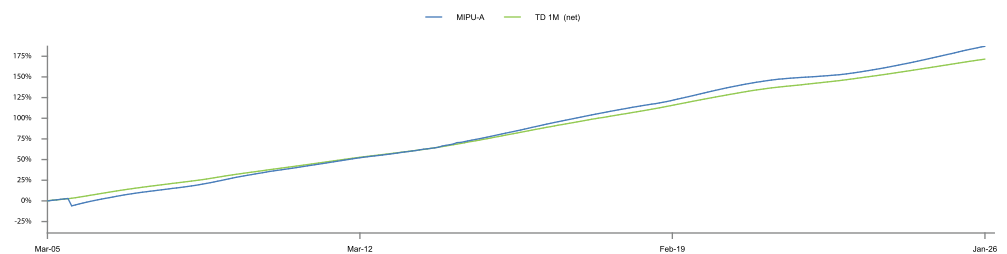
Deposit : 40,19%

Bonds** : 59,05%

*) excluding cash and cash equivalents

**) maturing < 1 year

Fund Performance

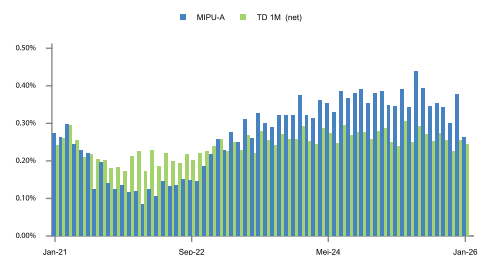


Top Holdings

(In Alphabetical Order)

Astra Sedaya Finance	Bonds	2,60%
Bank Hibank Indonesia	Deposit	4,93%
Bank Mega Tbk.	Deposit	4,18%
Bank Nagari	Deposit	4,01%
Bank Riau Kepri Syariah	Deposit	3,13%
Bank Sulawesi Utara dan Gorontalo	Deposit	2,80%
Bank Woori Saudara Indonesia 1906 Tbk.	Deposit	2,55%
BPD Jambi	Deposit	3,34%
Government	Bonds	31,00%
Pegadaian (Persero)	Bonds	5,75%

Monthly Return



Performance - 30 January 2026

	1 Month	3 Months	6 Months	1 Year	3 Years	5 Years	YTD	Since Inception
MIPU-A	: 0,26%	0,94%	2,00%	4,32%	12,87%	17,51%	0,26%	187,02%
Benchmark*	: 0,24%	0,73%	1,51%	3,15%	9,82%	15,63%	0,24%	171,55%

*Benchmark Description:

Since February 2011, Benchmark change to TD 1 Month (nett)
 Since May 2010 - January 2011 Benchmark using SBI 3 Month
 Since December 2008 - April 2010 Benchmark using SBI 1 Month

Highest Month

(November 2005)

1,24%

This Mutual fund had the highest performance of 1,24% in November 2005 and reached the lowest performance of -8,69% in September 2005.

Lowest Month

(September 2005)

-8,69%

Market Outlook

Money market yields continued to ease in January 2026, reflecting accommodative domestic liquidity conditions. Average SRBI yields declined further to around 4.69%, supported by Bank Indonesia's liquidity expansion through a reduction in outstanding SRBI instruments from Rp730.9 trillion at end-2025 to Rp694.0 trillion as of 20 January 2026. In line with expectations, bank deposit rates have adjusted lower by approximately 25-50 bps at the start of the year. While there was a modest uptick in money market yields toward the end of 2025, overall yields remain at relatively low levels and are expected to stay contained throughout 2026, consistent with a monetary outlook that still allows room for further easing. Against this backdrop, we believe current money market yields remain attractive on a relative basis, particularly when viewed against the potential decline in reinvestment yields should monetary conditions continue to loosen over the course of 2026.

Fund Bank Account

Citibank N.A., Indonesia

RD Mandiri Investa Pasar UangA

0-810525-002

DISCLAIMER

INVESTMENT IN MUTUAL FUND CONTAIN RISK. PRIOR TO INVESTING IN MUTUAL FUND, POTENTIAL INVESTOR MUST READ AND UNDERSTAND THE PROSPECTUS. PAST PERFORMANCE DOES NOT GUARANTEE / REFLECT THE FUTURE PERFORMANCE OF THE FUND. FINANCIAL SERVICE AUTHORITY (OJK) NEITHER GIVE ANY STATEMENT TO APPROVE OR REJECT THE SECURITIES NOR EXPRESS THE ACCURACY OR ADEQUACY OF THE CONTENTS OF MUTUAL FUND'S PROSPECTUS. ANY CONTRADICTION STATEMENT SHALL BE LEGAL BREACH. MUTUAL FUND IS A CAPITAL MARKET PRODUCT AND NOT A PRODUCT PUBLISHED BY SELLING AGENT/BANKS THE SELLING AGENT OF THE FUND SHALL NOT RESPONSIBLE FOR ANY CLAIM AND RISKS OF THE MANAGEMENT OF THE MUTUAL FUND'S PORTFOLIO BY INVESTMENT MANAGER.

This product information summary does not replace the Mutual Fund Prospectus and prepared by PT Mandiri Manajemen Investasi only for information needs and does not constitute an offer to buy or sell. All information contained in this document is presented correctly. If necessary, investors are advised to seek professional opinion before making an investment decision. Past performance is not necessarily a guide to future performance and is not also an estimate made to give an indication regarding future performance or trends.

PT Mandiri Manajemen Investasi is licensed and supervised by the Indonesia Financial Services Authority (Otoritas Jasa Keuangan) and every product offering is conducted by officers who are registered and supervised by the Indonesia Financial Services Authority (Otoritas Jasa Keuangan)

PT Mandiri Manajemen Investasi

Menara Mandiri 2 Lantai 15, Jl. Jend. Sudirman Kav. 54-55
 Jakarta 12190, Indonesia Call Center: (021) 526 3505



Mandiri investasi



Mandiri.investasi



Mandiri Investasi

Further information and Fund Prospectus can be accessed through our site www.mandiri-investasi.co.id