

# Homes Above It All



# ANANDAMAYA

## ‘Consisting of Bliss’

A luxurious resort home at the heart of Jakarta,  
Anandamaya Residences is a rare pearl,  
and a true treasure.

As the beauty within is revealed, bliss follows,  
fulfilling the impetus for its conception.



# The Capital Address in a Global City

Home to one of the most dynamic economies, Indonesia is growing at a rapid rate. At the centre of this activity is Jakarta - Indonesia's iconic capital, the gateway for global talent, capital and resources.

And at the heart of Jakarta's CBD, on Jalan Sudirman is Anandamaya Residences.

**DISCLAIMER:**  
While every reasonable care has been taken in preparing this brochure and in constructing the models and showflats, neither the Developer nor its agents will be held responsible for any inaccuracies or omissions. Visual representations, models, showflat displays and illustrations, photographs, art renderings and other graphic representations and references are intended to portray only artistic impressions of the development and décor and cannot be regarded as representations of fact. All areas and other measurements are approximate measurements and are subject to final survey. The property is subject to final inspection by the relevant authorities to comply with the current codes of practice. All information, specifications, renderings, visual representations and plans are current at the time of publication and are subject to change as may be required by us and/or the relevant authorities.  
All statements are believed to be correct but shall not be regarded as statements or representations of fact. All plans and models are not to scale unless expressly stated and are subject to any amendments which are required or approved by the relevant authorities. The Sale and Purchase Agreement shall form the entire agreement between the Developer and the Purchaser and shall supersede all statements, representations or promises made prior to the signing of the Sale and Purchase Agreement and shall in no way be modified by any statements, representations or promises made by us or our agents, which are not embodied in the Sale and Purchase Agreement.

# An outstanding collaboration



Astra was initially established in Jakarta in 1957 as a general trading company under the name of Astra International Inc. In 1990, the company changed its name to PT Astra International Tbk, and listed its shares on the Indonesia Stock Exchange under the ticker code ASII.

As of the end of 2013, Astra has a total of 197,434 employees working in 179 subsidiaries, associated companies, and joint-controlled entities spanning six business segments, namely Automotive, Financial Services, Heavy Equipment and Mining, Agribusiness, Infrastructure and Logistics, and Information Technology.

For over 57 years, Astra has witnessed the ups and downs of the Indonesian economy, while continuing to grow by leveraging opportunities and maintaining extensive synergy within as well as outside of Astra Group businesses.

Throughout its long history, Astra has successfully built a positive reputation and become one of the nation's household names. Astra offers a wide range of excellent products and services as well as providing extensive non-business contributions through its corporate social responsibility programs in education, environment, small and medium enterprises (SME) development and health. Supported by 8 foundations, such contributions are an integral part of Astra's journey to become the pride of the nation, a company that plays a role in ongoing efforts to benefit the Indonesian people at large.



- ↑ Automotive
- Financial Services
- ↓ Heavy Equipment and Mining



- ↑ Agribusiness
- Infrastructure and Logistics
- ↓ Information Technology



Hongkong Land is one of Asia's leading property investment, management and development groups. Founded in 1889, Hongkong Land's business is built on excellence, integrity and partnership.

The Group owns and manages almost 800,000 sq. m. of prime office and luxury retail property in key Asian cities, principally in Hong Kong and Singapore. Hongkong Land's properties attract the world's foremost companies and luxury brands.

The Group's prime Hong Kong portfolio of some 450,000 sq. m. is located in the heart of the Central district. In Singapore, its 165,000 sq. m. portfolio consists largely of prestigious office space located at Marina Bay, much of which is held through joint ventures. The Group also has a 50% interest in a prime office complex in Central Jakarta, and has a number of projects under development that include a luxury retail centre at Wangfujing in Beijing.

Hongkong Land is developing a number of largely residential projects, in cities across Greater China and Southeast Asia. In Singapore, its subsidiary, MCL Land, is a well-established residential developer.

Hongkong Land Holdings Limited is incorporated in Bermuda. It has a primary listing on the London Stock Exchange, and secondary listings in Bermuda and Singapore. The Group's assets and investments are managed from Hong Kong by Hongkong Land Limited. Hongkong Land is a member of the Jardine Matheson Group.



- ↑ One Central (Macau)
- Hallmark Residences (Singapore)
- ↓ Serenade (Hong Kong)
- ↑ WE City (Chengdu, China)
- Marina Bay Financial Centre (Singapore)
- ↓ Marina Bay Suites (Singapore)

## Taking pride of place in the centre of Jakarta's CBD

Enjoy the ultimate luxury lifestyle along Jalan Sudirman, just a heartbeat away from the conveniences and pleasures of the city. Take advantage of the potential capital appreciation and solid rental yields that come from this prime location. Close to both work and entertainment, every advantage is yours.



## The work of a Master



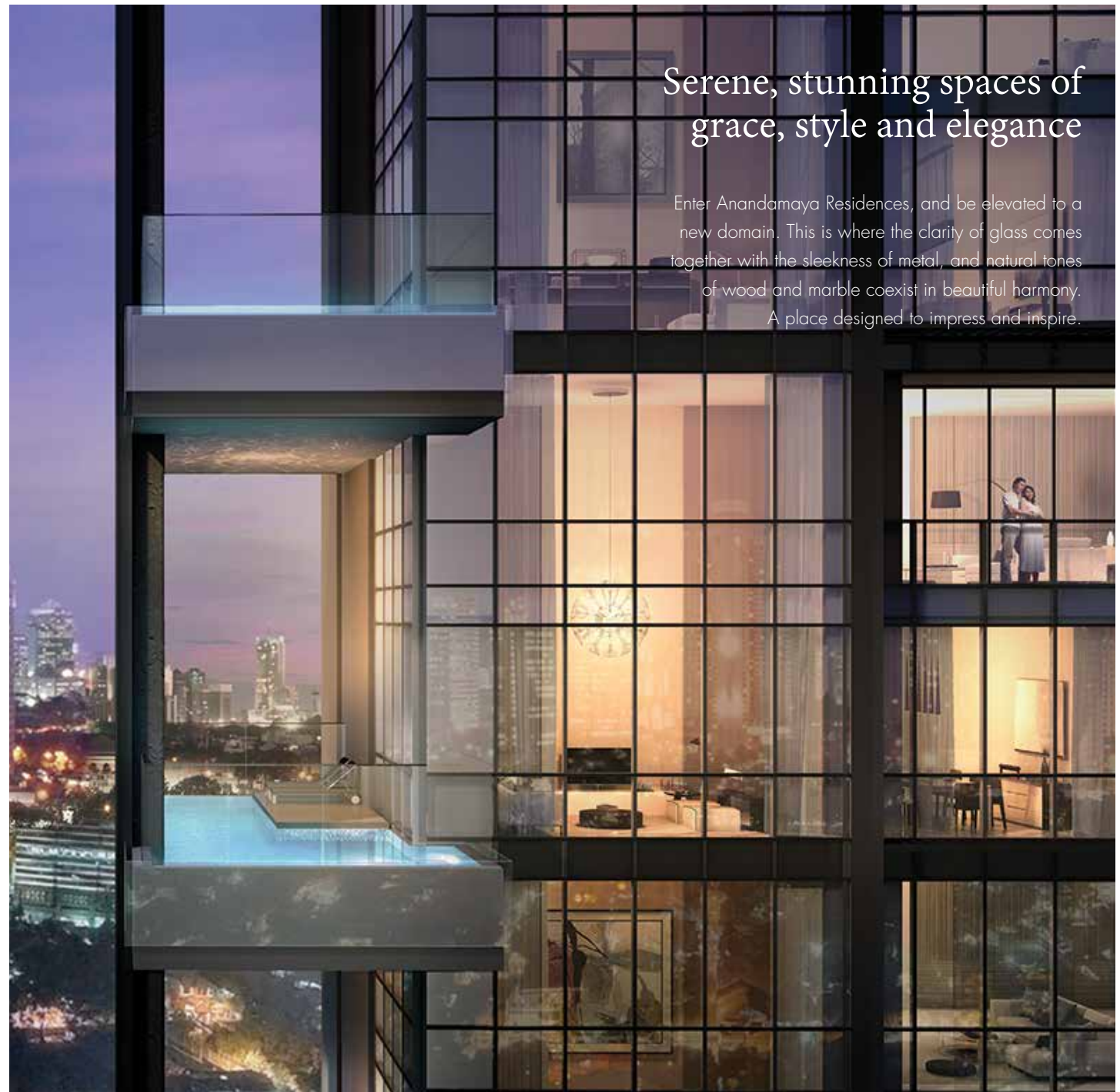
### SCDA Architects, Soo K. Chan

SCDA Architects is an award-winning design and architecture practice founded and headed by internationally renowned architect Chan Soo Khian, a graduate of Yale University. He was awarded the Royal Institute of British Architects Worldwide Award for the Lincoln Modern as well as the President's Design Award and Singapore Designer of the Year.

Soo Khian is particularly well-known for his iconic residential developments that blur the distinction between indoor and outdoor spaces. These include the highly acclaimed The Marq on Paterson Hill, Nassim Park Residences, and 21 Angullia Park in Singapore.

With his boutique residential project, Soori High Line in New York, he is breaking new boundaries in the United States. He also created the Singapore embassy in New Delhi, India as well as the Waldorf Astoria Resort and Alila Villas Soori in Bali.

SCDA Architects' architecture work for Anandamaya Residences is a further refinement of Soo Khian's celebrated design philosophy that creates a stunning and aesthetic profile that is set to redefine the skyline of the Jakarta CBD.



## Serene, stunning spaces of grace, style and elegance

Enter Anandamaya Residences, and be elevated to a new domain. This is where the clarity of glass comes together with the sleekness of metal, and natural tones of wood and marble coexist in beautiful harmony. A place designed to impress and inspire.

#### DISCLAIMER:

While every reasonable care has been taken in preparing this brochure and in constructing the models and showflats, neither the Developer nor its agents will be held responsible for any inaccuracies or omissions. Visual representations, models, showflat displays and illustrations, photographs, art renderings and other graphic representations and references are intended to portray only artistic impressions of the development and décor and cannot be regarded as representations of fact. All areas and other measurements are approximate measurements and are subject to final survey. The property is subject to final inspection by the relevant authorities to comply with the current codes of practice.

All information, specifications, renderings, visual representations and plans are current at the time of publication and are subject to change as may be required by us and/or the relevant authorities.

All statements are believed to be correct but shall not be regarded as statements or representations of fact. All plans and models are not to scale unless expressly stated and are subject to any amendments which are required or approved by the relevant authorities. The Sale and Purchase Agreement shall form the entire agreement between the Developer and the Purchaser and shall supersede all statements, representations or promises made prior to the signing of the Sale and Purchase Agreement and shall in no way be modified by any statements, representations or promises made by us or our agents, which are not embodied in the Sale and Purchase Agreement.

## Landscaped by an International Icon



### Bensley Design Studios, Bill Bensley

Bill Bensley, the highly acclaimed landscape architect designer is known for integrating sophisticated structures with stunning natural elements, combining traditional designs and techniques with a modern design aesthetic and contemporary styling.

The Bangkok-based, Harvard educated Bill Bensley has an underlying design philosophy that is both sensual and imaginative, marked by a true artistic sensibility and a keen feel for luxury.

Some of his celebrated resorts and residences which have received rave reviews include, Anantara Resort & Spa in Koh Samui, The Intercontinental in Danang, Vietnam, Maia in Seychelles, St. Regis in Bali, Coral and Paradise Islands of Sentosa Cove in Singapore, and the Four Seasons Tented Camp at Chiang Rai.

Bill Bensley's inspirational designs for the landscaping at Anandamaya Residences are a breathtaking realisation of imagination and materials, of spaces and indulgences. It is a world unto itself, with a real sense of belonging right in the middle of Jakarta's business district – a unique vision perhaps never experienced and unprecedented in any other high-rise residential development anywhere else.



**DISCLAIMER:**

While every reasonable care has been taken in preparing this brochure and in constructing the models and showflats, neither the Developer nor its agents will be held responsible for any inaccuracies or omissions. Visual representations, models, showflat displays and illustrations, photographs, art renderings and other graphic representations and references are intended to portray only artistic impressions of the development and décor and cannot be regarded as representations of fact. All areas and other measurements are approximate measurements and are subject to final survey. The property is subject to final inspection by the relevant authorities to comply with the current codes of practice.

All information, specifications, renderings, visual representations and plans are current at the time of publication and are subject to change as may be required by us and/or the relevant authorities.

All statements are believed to be correct but shall not be regarded as statements or representations of fact. All plans and models are not to scale unless expressly stated and are subject to any amendments which are required or approved by the relevant authorities. The Sale and Purchase Agreement shall form the entire agreement between the Developer and the Purchaser and shall supersede all statements, representations or promises made prior to the signing of the Sale and Purchase Agreement and shall in no way be modified by any statements, representations or promises made by us or our agents, which are not embodied in the Sale and Purchase Agreement.

# LANDSCAPE PLAN



- ① LAGOON POOL
- ② FITNESS & SPA (BELOW)
- ③ MINI MART
- ④ TENNIS COURT
- ⑤ JOGGING TRACK
- ⑥ GAZEBO AREA
- ⑦ TRANQUIL GARDEN
- ⑧ LOUNGE
- ⑨ CHILDREN'S AREA/POOL
- ⑩ 50M SWIMMING POOL
- ⑪ INDOOR POOL (BELOW)
- ⑫ SERENITY GARDEN
- ⑬ TOWER ENTRY/DROP OFF
- ⑭ ENTRANCE GATE
- ⑮ DEVELOPMENT ENTRY GATE
- ⑯ BARBEQUE
- ⑰ FUNCTION ROOM & LIBRARY
- ⑱ INDOOR BADMINTON COURT (BELOW)

**DISCLAIMER:** While every reasonable care has been taken in preparing this brochure and in constructing the models and showflats, neither the Developer nor its agents will be held responsible for any inaccuracies or omissions. Visual representations, models, showflat displays and illustrations, photographs, art renderings and other graphic representations and references are intended to portray only artistic impressions of the development and décor and cannot be regarded as representations of fact. All areas and other measurements are approximate measurements and are subject to final survey. The property is subject to final inspection by the relevant authorities to comply with the current codes of practice. All information, specifications, renderings, visual representations and plans are current at the time of publication and are subject to change as may be required by us and/or the relevant authorities. All statements are believed to be correct but shall not be regarded as statements or representations of fact. All plans and models are not to scale unless expressly stated and are subject to any amendments which are required or approved by the relevant authorities. The Sale and Purchase Agreement shall form the entire agreement between the Developer and the Purchaser and shall supersede all statements, representations or promises made prior to the signing of the Sale and Purchase Agreement and shall in no way be modified by any statements, representations or promises made by us or our agents, which are not embodied in the Sale and Purchase Agreement.

## The epitome of luxury living

The towers soar into the sky, proud paragons of modern contemporary architecture. The arrival experience begins on a high note with the professional concierge at the grand lobby. All residences are adorned with balconies, offering generous spaces boasting a minimum 3.2m ceiling height and also the possibilities of comfortable multi-generational living.



**DISCLAIMER:**

While every reasonable care has been taken in preparing this brochure and in constructing the models and showflats, neither the Developer nor its agents will be held responsible for any inaccuracies or omissions. Visual representations, models, showflat displays and illustrations, photographs, art renderings and other graphic representations and references are intended to portray only artistic impressions of the development and décor and cannot be regarded as representations of fact. All areas and other measurements are approximate measurements and are subject to final survey. The property is subject to final inspection by the relevant authorities to comply with the current codes of practice. All information, specifications, renderings, visual representations and plans are current at the time of publication and are subject to change as may be required by us and/or the relevant authorities.

All statements are believed to be correct but shall not be regarded as statements or representations of fact. All plans and models are not to scale unless expressly stated and are subject to any amendments which are required or approved by the relevant authorities. The Sale and Purchase Agreement shall form the entire agreement between the Developer and the Purchaser and shall supersede all statements, representations or promises made prior to the signing of the Sale and Purchase Agreement and shall in no way be modified by any statements, representations or promises made by us or our agents, which are not embodied in the Sale and Purchase Agreement.

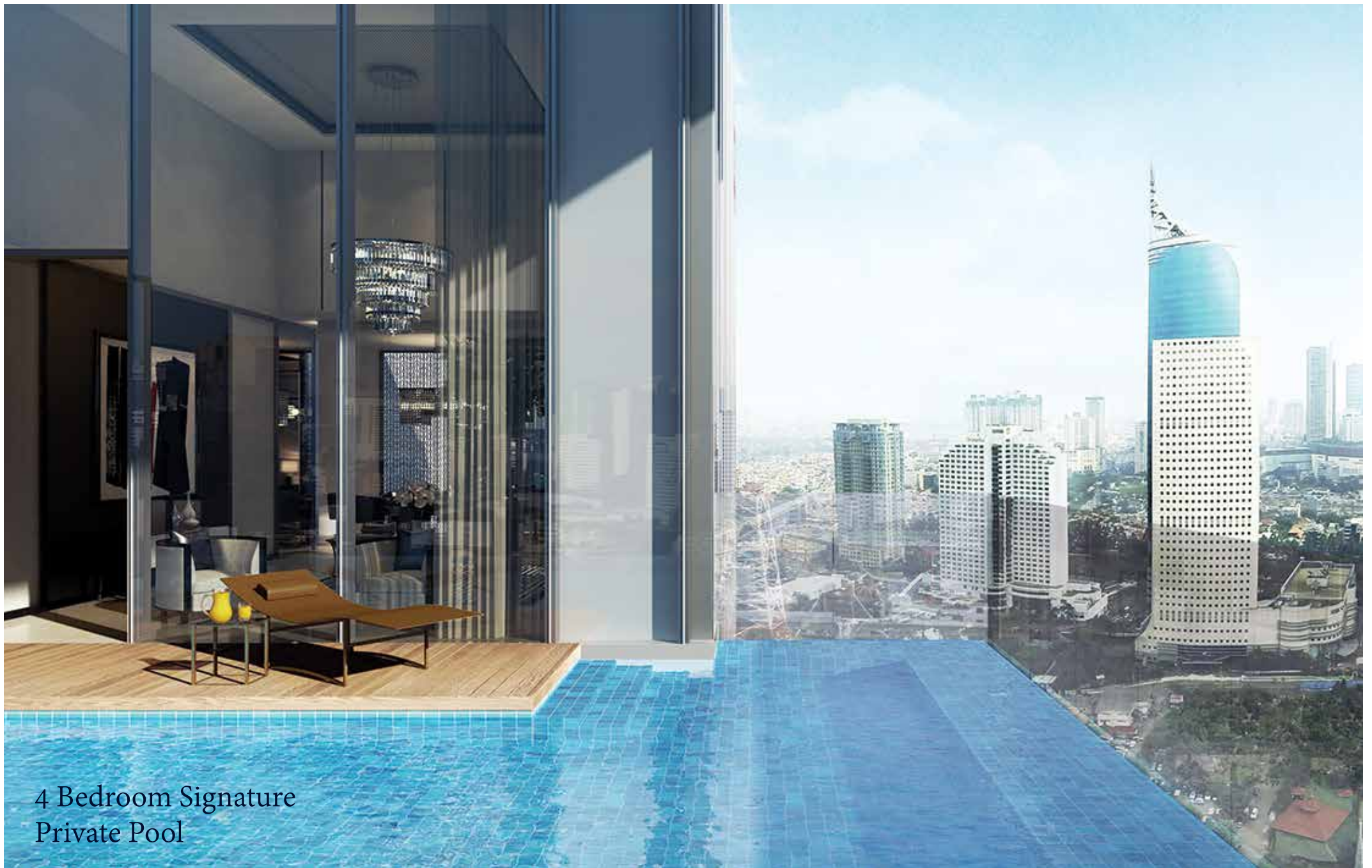


### 3 Bedroom Living & Dining Area

**DISCLAIMER:**

While every reasonable care has been taken in preparing this brochure and in constructing the models and showflats, neither the Developer nor its agents will be held responsible for any inaccuracies or omissions. Visual representations, models, showflat displays and illustrations, photographs, art renderings and other graphic representations and references are intended to portray only artistic impressions of the development and décor and cannot be regarded as representations of fact. All areas and other measurements are approximate measurements and are subject to final survey. The property is subject to final inspection by the relevant authorities to comply with the current codes of practice. All information, specifications, renderings, visual representations and plans are current at the time of publication and are subject to change as may be required by us and/or the relevant authorities.

All statements are believed to be correct but shall not be regarded as statements or representations of fact. All plans and models are not to scale unless expressly stated and are subject to any amendments which are required or approved by the relevant authorities. The Sale and Purchase Agreement shall form the entire agreement between the Developer and the Purchaser and shall supersede all statements, representations or promises made prior to the signing of the Sale and Purchase Agreement and shall in no way be modified by any statements, representations or promises made by us or our agents, which are not embodied in the Sale and Purchase Agreement.



## 4 Bedroom Signature Private Pool

**DISCLAIMER:**

While every reasonable care has been taken in preparing this brochure and in constructing the models and showflats, neither the Developer nor its agents will be held responsible for any inaccuracies or omissions. Visual representations, models, showflat displays and illustrations, photographs, art renderings and other graphic representations and references are intended to portray only artistic impressions of the development and décor and cannot be regarded as representations of fact. All areas and other measurements are approximate measurements and are subject to final survey. The property is subject to final inspection by the relevant authorities to comply with the current codes of practice. All information, specifications, renderings, visual representations and plans are current at the time of publication and are subject to change as may be required by us and/or the relevant authorities.

All statements are believed to be correct but shall not be regarded as statements or representations of fact. All plans and models are not to scale unless expressly stated and are subject to any amendments which are required or approved by the relevant authorities. The Sale and Purchase Agreement shall form the entire agreement between the Developer and the Purchaser and shall supersede all statements, representations or promises made prior to the signing of the Sale and Purchase Agreement and shall in no way be modified by any statements, representations or promises made by us or our agents, which are not embodied in the Sale and Purchase Agreement.

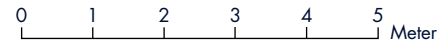
# 2 BEDROOM DELUXE



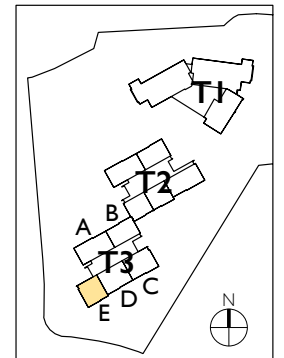
**TOWER 3**

Floor	A	B	C	D	E
59					
58					
57					
56					
55					
53					
52					
51					
50					
39					
38					
37					
36					
35					
33					
32					
31					
30					
29					
28					
27					
26					
25					
23					
22					
21					
20					
19					
18					
17					
16					
15					
12					
11					
10					
9					
8					
7					
6					
5					
3					
2					
1					
GF					

**NFA : ±109 sqm**  
**SGFA : ±130 sqm**



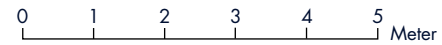
**DISCLAIMER:**  
 While every reasonable care has been taken in preparing this brochure and in constructing the models and showflats, neither the Developer nor its agents will be held responsible for any inaccuracies or omissions. Visual representations, models, showflat displays and illustrations, photographs, art renderings and other graphic representations and references are intended to portray only artistic impressions of the development and décor and cannot be regarded as representations of fact. All areas and other measurements are approximate measurements and are subject to final survey. The property is subject to final inspection by the relevant authorities to comply with the current codes of practice.  
 All information, specifications, renderings, visual representations and plans are current at the time of publication and are subject to change as may be required by us and/or the relevant authorities.  
 All statements are believed to be correct but shall not be regarded as statements or representations of fact. All plans and models are not to scale unless expressly stated and are subject to any amendments which are required or approved by the relevant authorities. The Sale and Purchase Agreement shall form the entire agreement between the Developer and the Purchaser and shall supersede all statements, representations or promises made prior to the signing of the Sale and Purchase Agreement and shall in no way be modified by any statements, representations or promises made by us or our agents, which are not embodied in the Sale and Purchase Agreement.



# 2 BEDROOM SUITE



**NFA : ±125 sqm**  
**SGFA : ±148 sqm**



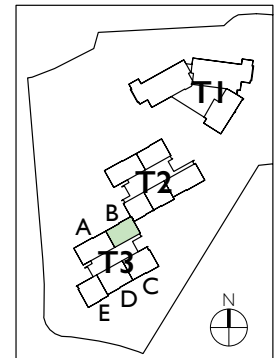
**DISCLAIMER:**

While every reasonable care has been taken in preparing this brochure and in constructing the models and showflats, neither the Developer nor its agents will be held responsible for any inaccuracies or omissions. Visual representations, models, showflat displays and illustrations, photographs, art renderings and other graphic representations and references are intended to portray only artistic impressions of the development and décor and cannot be regarded as representations of fact. All areas and other measurements are approximate measurements and are subject to final survey. The property is subject to final inspection by the relevant authorities to comply with the current codes of practice. All information, specifications, renderings, visual representations and plans are current at the time of publication and are subject to change as may be required by us and/or the relevant authorities.

All statements are believed to be correct but shall not be regarded as statements or representations of fact. All plans and models are not to scale unless expressly stated and are subject to any amendments which are required or approved by the relevant authorities. The Sale and Purchase Agreement shall form the entire agreement between the Developer and the Purchaser and shall supersede all statements, representations or promises made prior to the signing of the Sale and Purchase Agreement and shall in no way be modified by any statements, representations or promises made by us or our agents, which are not embodied in the Sale and Purchase Agreement.

**TOWER 3**

Floor	A	B	C	D	E
59					
58					
57					
56					
55					
53					
52					
51					
50					
39					
38					
37					
36					
35					
33					
32					
31					
30					
29					
28					
27					
26					
25					
23					
22					
21					
20					
19					
18					
17					
16					
15					
12					
11					
10					
9					
8					
7					
6					
5					
3					
2					
1					
GF					



# 3 BEDROOM DELUXE



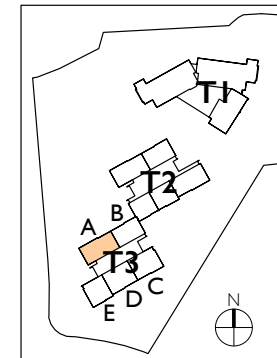
**TOWER 3**

Floor	A	B	C	D	E
59					
58					
56					
55					
53					
52					
51					
50					
39					
38					
37					
36					
35					
33					
32					
31					
30					
29					
28					
27					
26					
25					
23					
22					
21					
20					
19					
18					
17					
16					
15					
12					
11					
10					
9					
8					
7					
6					
5					
3					
2					
1					
GF					

**NFA : ±145 sqm**  
**SGFA : ±172 sqm**



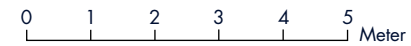
**DISCLAIMER:**  
 While every reasonable care has been taken in preparing this brochure and in constructing the models and showflats, neither the Developer nor its agents will be held responsible for any inaccuracies or omissions. Visual representations, models, showflat displays and illustrations, photographs, art renderings and other graphic representations and references are intended to portray only artistic impressions of the development and décor and cannot be regarded as representations of fact. All areas and other measurements are approximate measurements and are subject to final survey. The property is subject to final inspection by the relevant authorities to comply with the current codes of practice.  
 All information, specifications, renderings, visual representations and plans are current at the time of publication and are subject to change as may be required by us and/or the relevant authorities.  
 All statements are believed to be correct but shall not be regarded as statements or representations of fact. All plans and models are not to scale unless expressly stated and are subject to any amendments which are required or approved by the relevant authorities. The Sale and Purchase Agreement shall form the entire agreement between the Developer and the Purchaser and shall supersede all statements, representations or promises made prior to the signing of the Sale and Purchase Agreement and shall in no way be modified by any statements, representations or promises made by us or our agents, which are not embodied in the Sale and Purchase Agreement.



# 3 BEDROOM SUITE



**NFA : ±182 sqm**  
**SGFA : ±216 sqm**



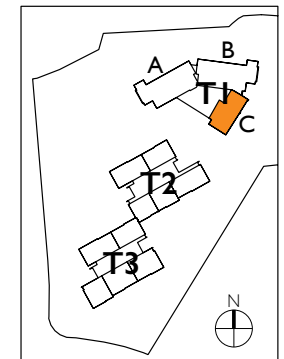
**DISCLAIMER:**

While every reasonable care has been taken in preparing this brochure and in constructing the models and showflats, neither the Developer nor its agents will be held responsible for any inaccuracies or omissions. Visual representations, models, showflat displays and illustrations, photographs, art renderings and other graphic representations and references are intended to portray only artistic impressions of the development and décor and cannot be regarded as representations of fact. All areas and other measurements are approximate measurements and are subject to final survey. The property is subject to final inspection by the relevant authorities to comply with the current codes of practice. All information, specifications, renderings, visual representations and plans are current at the time of publication and are subject to change as may be required by us and/or the relevant authorities.

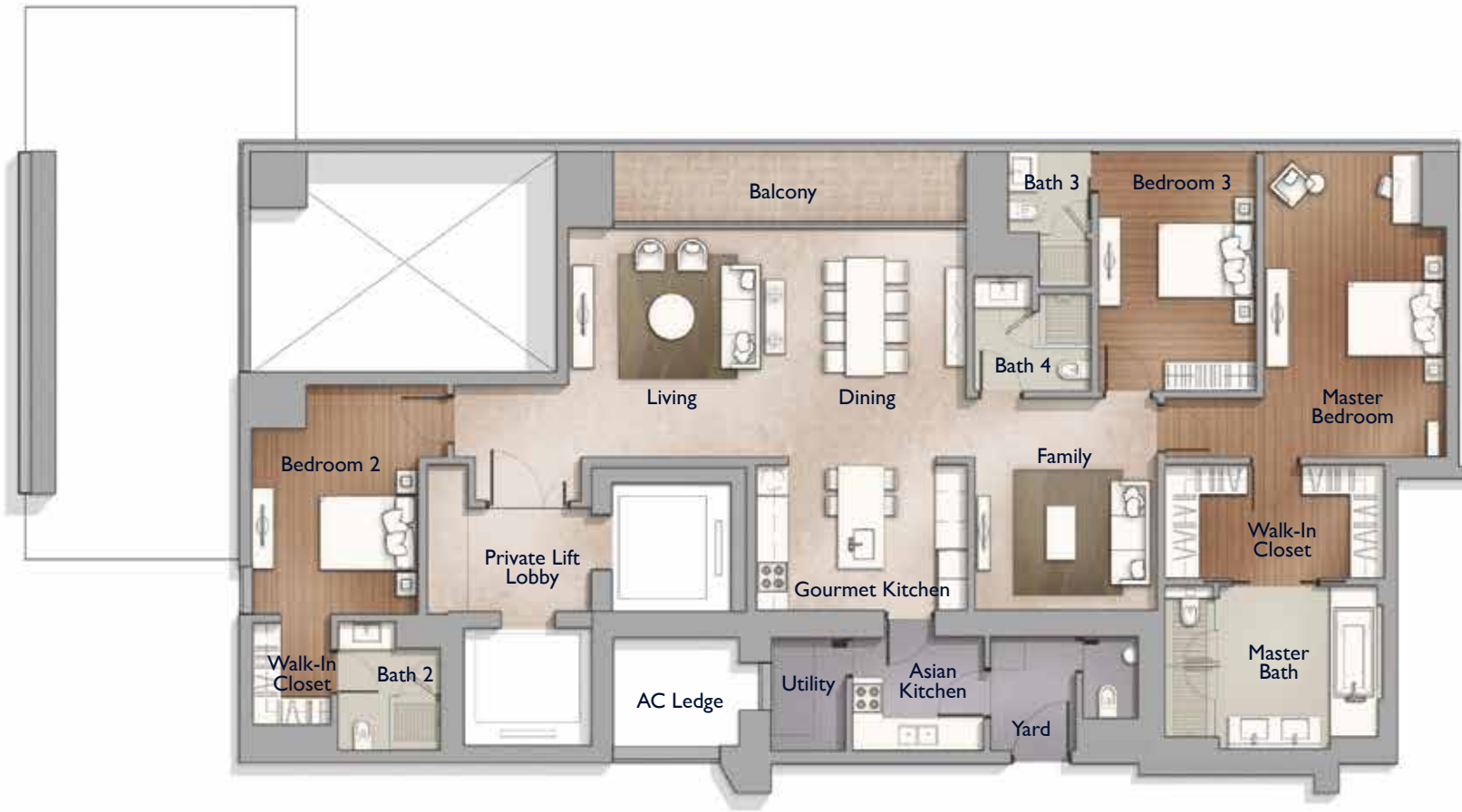
All statements are believed to be correct but shall not be regarded as statements or representations of fact. All plans and models are not to scale unless expressly stated and are subject to any amendments which are required or approved by the relevant authorities. The Sale and Purchase Agreement shall form the entire agreement between the Developer and the Purchaser and shall supersede all statements, representations or promises made prior to the signing of the Sale and Purchase Agreement and shall in no way be modified by any statements, representations or promises made by us or our agents, which are not embodied in the Sale and Purchase Agreement.

**ANANDAMAYA ONE**

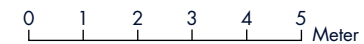
Floor	A	B	C
P1			
P2			
P3			
55			
53			
52			
51			
50			
39			
38			
37			
36			
35			
33			
32			
31			
30			
29			
28			
27			
26			
25			
23			
22			
21			
20			
19			
18			
17			
16			
15			
12			
11			
10			
9			
8			
7			
6			
5			
3			
2			
1			
GF			



# 3 BEDROOM GRANDE

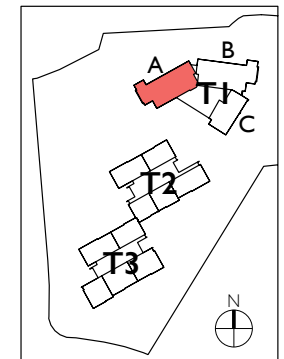


**NFA : ±226 sqm**  
**SGFA : ±268 sqm**



**ANANDAMAYA ONE**

Floor	A	B	C
P1			
P2			
P3			
55			
53			
52			
51			
50			
39			
38			
37			
36			
35			
33			
32			
31			
30			
29			
28			
27			
26			
25			
23			
22			
21			
20			
19			
18			
17			
16			
15			
12			
11			
10			
9			
8			
7			
6			
5			
3			
2			
1			
GF			

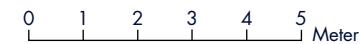


**DISCLAIMER:**  
 While every reasonable care has been taken in preparing this brochure and in constructing the models and showflats, neither the Developer nor its agents will be held responsible for any inaccuracies or omissions. Visual representations, models, showflat displays and illustrations, photographs, art renderings and other graphic representations and references are intended to portray only artistic impressions of the development and décor and cannot be regarded as representations of fact. All areas and other measurements are approximate measurements and are subject to final survey. The property is subject to final inspection by the relevant authorities to comply with the current codes of practice.  
 All information, specifications, renderings, visual representations and plans are current at the time of publication and are subject to change as may be required by us and/or the relevant authorities.  
 All statements are believed to be correct but shall not be regarded as statements or representations of fact. All plans and models are not to scale unless expressly stated and are subject to any amendments which are required or approved by the relevant authorities. The Sale and Purchase Agreement shall form the entire agreement between the Developer and the Purchaser and shall supersede all statements, representations or promises made prior to the signing of the Sale and Purchase Agreement and shall in no way be modified by any statements, representations or promises made by us or our agents, which are not embodied in the Sale and Purchase Agreement.

# 4 BEDROOM SIGNATURE



**NFA : ±305 sqm**  
**SGFA : ±361 sqm**



**DISCLAIMER:**  
 While every reasonable care has been taken in preparing this brochure and in constructing the models and showflats, neither the Developer nor its agents will be held responsible for any inaccuracies or omissions. Visual representations, models, showflat displays and illustrations, photographs, art renderings and other graphic representations and references are intended to portray only artistic impressions of the development and décor and cannot be regarded as representations of fact. All areas and other measurements are approximate measurements and are subject to final survey. The property is subject to final inspection by the relevant authorities to comply with the current codes of practice.  
 All information, specifications, renderings, visual representations and plans are current at the time of publication and are subject to change as may be required by us and/or the relevant authorities.  
 All statements are believed to be correct but shall not be regarded as statements or representations of fact. All plans and models are not to scale unless expressly stated and are subject to any amendments which are required or approved by the relevant authorities. The Sale and Purchase Agreement shall form the entire agreement between the Developer and the Purchaser and shall supersede all statements, representations or promises made prior to the signing of the Sale and Purchase Agreement and shall in no way be modified by any statements, representations or promises made by us or our agents, which are not embodied in the Sale and Purchase Agreement.

**ANANDAMAYA ONE**

Floor	A	B	C
P1			
P2			
P3			
55			
53			
52			
51			
50			
39			
38			
37			
36			
35			
33			
32			
31			
30			
29			
28			
27			
26			
25			
23			
22			
21			
20			
19			
18			
17			
16			
15			
12			
11			
10			
9			
8			
7			
6			
5			
3			
2			
1			
GF			

